

Release 1.01  
Office, man-portable, self assembly type EC1.1

# **XPANDAOFFICE**

assembly instructions





- 1) Place the pack onto firm, level ground



- 2) Remove the four packing posts using a 19mm spanner. (**Fig. 2 & 3**)



- 3) Remove the four bolts on the corners of the unit using a 13mm spanner. (**Fig. 4**)



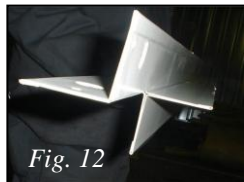
- 4) Remove the roof fascia cover on both sides (**Fig. 5 & 6**)



- 5) Remove the roof connector (4 x 13mm bolts) (**Fig. 7 & 8**)



- 6) Remove the roof sections and the timber packing. Remove the corner packing posts, take all components out of the pack to leave you with a clear chassis to work on. (**Fig. 9, 10 & 11**)



- 7) Fit one inner corner profile (**Fig. 12**) to the chassis as shown using 19mm bolts & washers. Then fit one outer corner to the chassis as shown using 19mm bolts & washers (**Fig. 13**)



- 8) Remove the plastic film from all panels. (**Fig. 14**)  
9) Starting with the short side, slot a narrow wall panel into the corner post slot (cut side toward post). Then two full panels (door, blank panels) as required.



- 10) Fit another internal and external corner post.  
11) Fit panels as before. Continue until all four walls are fitted (**Fig. 15, 16 & 17**)



- 12) Fit the ceiling retention bars. (**Fig. 18**)  
13) These fit on the top of the wall panels and slot into the top of each corner post. (**Fig 19 & 20**).



**NOTE: If the pins do not line up with the holes – the cabin is not level.**



Fig. 21

- 14) Fit the ceiling panels. **(Fig. 21)**
- 15) These fit on the top of the retention bars and slot together like the wall panels



Fig. 22

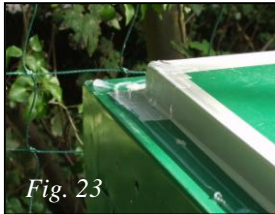


Fig. 23

**18) Weather seal the inner roof** *(Optional - but recommended)*

Use the supplied silver waterproofing tape to seal between all joints on the roof. This forms a second line of defence for extreme weather conditions, we recommend it is applied as follows:

- a) Between roof panels **(Fig. 22)**
- b) All around the edge of the roof panels where they meet the ceiling retention bar. **Tip: Lap the tape over the ceiling panel and down over the ceiling retention bar. This prevents capillary action in extreme weather conditions.**
- c) Pay particular attention to the corners of the roof frame. **(Fig. 23)**



Fig. 24

- 16) Slide on the roof panels. Take care to ensure the lip locates correctly where the two halves connect. **(Fig. 24 & 25).**

- 17) Fit the centre roof cap with 13mm bolts & washers. **(Fig. 26 & 27).**



Fig. 25

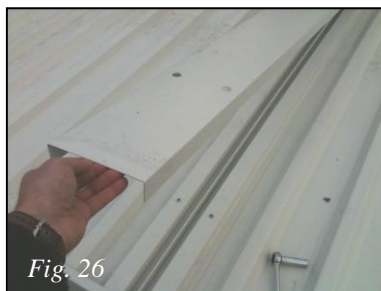


Fig. 26



Fig. 27



Fig. 28

- 18) Fit the roof fascia to both long sides. **(Fig. 28).**

- 19) Fit the bolts into the four corners. **(Fig.29).**



Fig. 29

***Congratulations – you have completed your office!***



*Fig. 27*

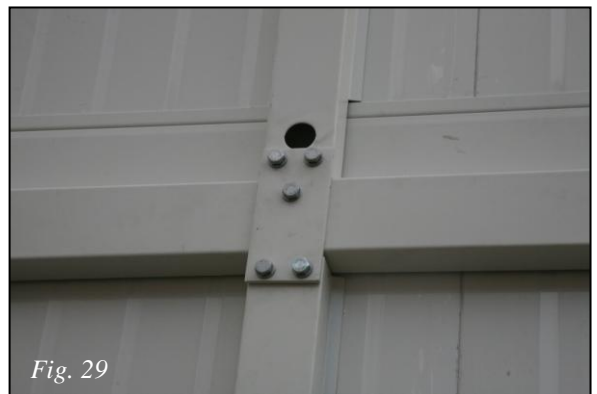
### Lifting Kit (Optional)

The lifting kit simply bolts onto the side of the XPandaOffice as shown.

To stack one on top of the other, simply substitute the lifting eyes (**Fig. 28**) for the supplied connection brackets (**Fig. 29**) as shown to provide secure stacking.



*Fig. 28*



*Fig. 29*



*Fig. 30*

**Thank you for purchasing this unique building.**

XPandaOffice can be linked together to form a modular building by using a simple linking kit. Also available: windows guards, electric packs, forklift tunnels and replacement panels. Contact your dealer for more information.