

uPVC double glazed window
included as standard

XPANDACABIN

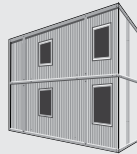


BUILDING CHECKLIST

	XPandaHomeOffice™	Standard Cabin
Flat-packed	✓	X
Man-portable	✓	X
Flexible	✓	X
Insulated	✓	✓
Simple Assembly	✓	X
Modular	✓	X



XPANDAOFFICE



manportable 20ft office

XPANDACHEM



sumped materials store

XPANDASTORE



storage building

Ideal for siting in locations with limited access. Light enough to be man handled and with components that are small enough to fit through small passageways.

CONTACT INFO:



www.pandabuildings.com

01795 810 249

info@pandabuildings.com

brochure design by OB Studio



FLAT-PACKED, MAN-PORTABLE, MODULAR BUILDINGS



XPANDA
HOME OFFICE

the flexible workspace building

...that can go anywhere!



assembled XPandaHomeOffice™ can be lifted and moved by crane or forklift



endless design options



the standard unit arrives with 1 window and 1 door

The insulated, flat-pack, man-portable, modular office building

All components are totally man-portable and can be carried into locations with restricted access for the simple assembly (approx 1 hour)

The only tools required are a socket set and screw driver

The panelled system is manufactured in galvanized steel with a cement particle floor for a long life span

The flexible panel system means that doors, walls and windows can always be relocated within the structure

Units can be linked together to form larger areas of storage space, side to side or end to end

If not in use the XPandaHomeOffice™ can be returned to its flat-packed form for efficient transportation or storage

All parts of an XPandaHomeOffice™ can be replaced.

Durable protective powder coated finish:



4.3m XPandaHomeOffice™ model shown



arrives flat-packed



man-portable



simple to assemble



ready for use



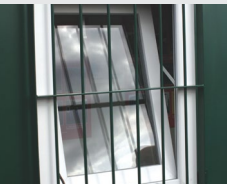
use the linking kit to form larger buildings

XPandaHomeOffice™ accessories

ELECTRIC PACK: HEATER, LIGHTING KIT, FUSE BOX, TRUNKING, PLUGS, SWITCHES...



EXTERNAL WINDOW GRILLE



LINKING KIT



OPTIONAL PITCHED ROOF KIT



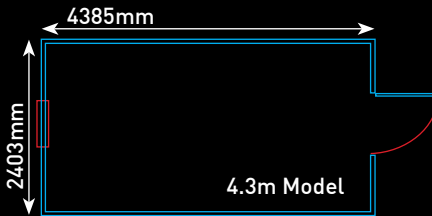
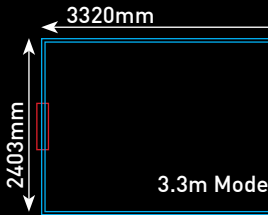
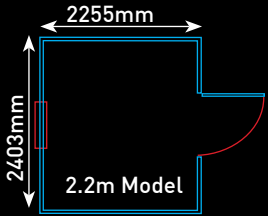
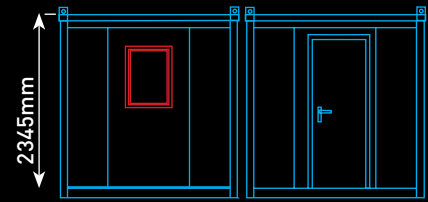
OPTIONAL FULL HEIGHT WINDOWS AND DOORS



Basic sizes (all expandable)



Length: 2.2m or 3.3m or 4.3m
Width: 2.3m (excluding gutter)
Height: 2.3m

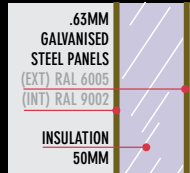


Technical specification

DIMENSIONS

2255mm (L) x 2403mm (W). Weight: 770kg
3320mm (L) x 2403mm (W). Weight: 935kg
4385mm (L) x 2403mm (W). Weight: 1100kg
External height 2345mm

WALLS:



Vacuum bonded sandwich panels. Powder coated galvanized steel (0.63mm), exterior 'moss green', internal 'white'. Insulation - 50mm polystyrene

ROOF:

Exterior covering - 0.73 mm powder coated box profile galvanized steel with two gutters for effective rainwater disposal to all four corners with additional drain points along the gutter.
Interior - vacuum bonded sandwich panels as per walls.
Snow loading - 0.75 kN/m² evenly distributed

CHASSIS / FRAME:

Box profile, hot dipped galvanized steel
Corner columns - 1.5mm cold formed DKP steel. Supplied with 4 lifting eyes. All surfaces are powder coated in RAL 6005 (Moss Green).
Floor Construction - cement particle board covered with 2mm PVC linoleum (flash point B1 - difficult to burn, smoke density Q1). Floor section has no insulation.
Floor loading - 150kg/m2 evenly distributed.

DOOR:

Frame - cold formed powder coated 1.25 mm galvanized steel.
Door - both surfaces powder coated (External - Moss Green, internal - White) galvanized steel
0.73 mm galvanized steel, complete with door handle and replaceable euro cylinder lock.

STANDARD WINDOW:

Frames - 1.25 mm cold formed powder coated galvanized steel.
Window - uPVC double glazed window frame with vacuum sealed unit. (4+9+4).
Size - 800 mm x 600 mm
Type - vertically inward opening mechanism with single handle and lock.
Other types available, please ask for details.

ELECTRICAL EQUIPMENT:

No electrical wiring and equipment fitted.
The unit is designed to have a surface mounted electrical installation. Optional electrical pack available.

EXPANDABLE

Units can be enlarged by the addition of further units. A special linking kit is available to extend side to side or end to end.

NOTE:

XPandaHomeOffice™ is not designed to comply with Building Regulations approval.
Doors and windows can be fitted anywhere in the units.

Due to our continuous product development programme, we reserve the right to change the specifications without prior notice.