

PANDA KIOSK

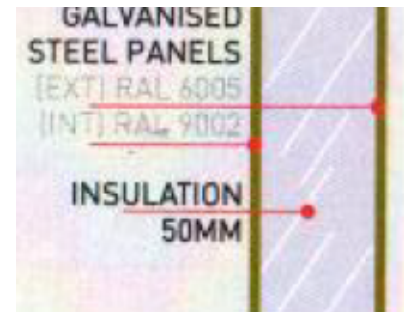
Technical data

DIMENSIONS

- Length: 1126mm (1208mm including roof)
- Width: 1126mm (1208mm including roof)
- Height: 2350mm
- Weight: 370kg

WALLS

Vacuum bonded sandwich panels. Powder coated galvanised steel (0.63mm), exterior 'Moss green' internal 'white'.
Insulation 50mm polystyrene



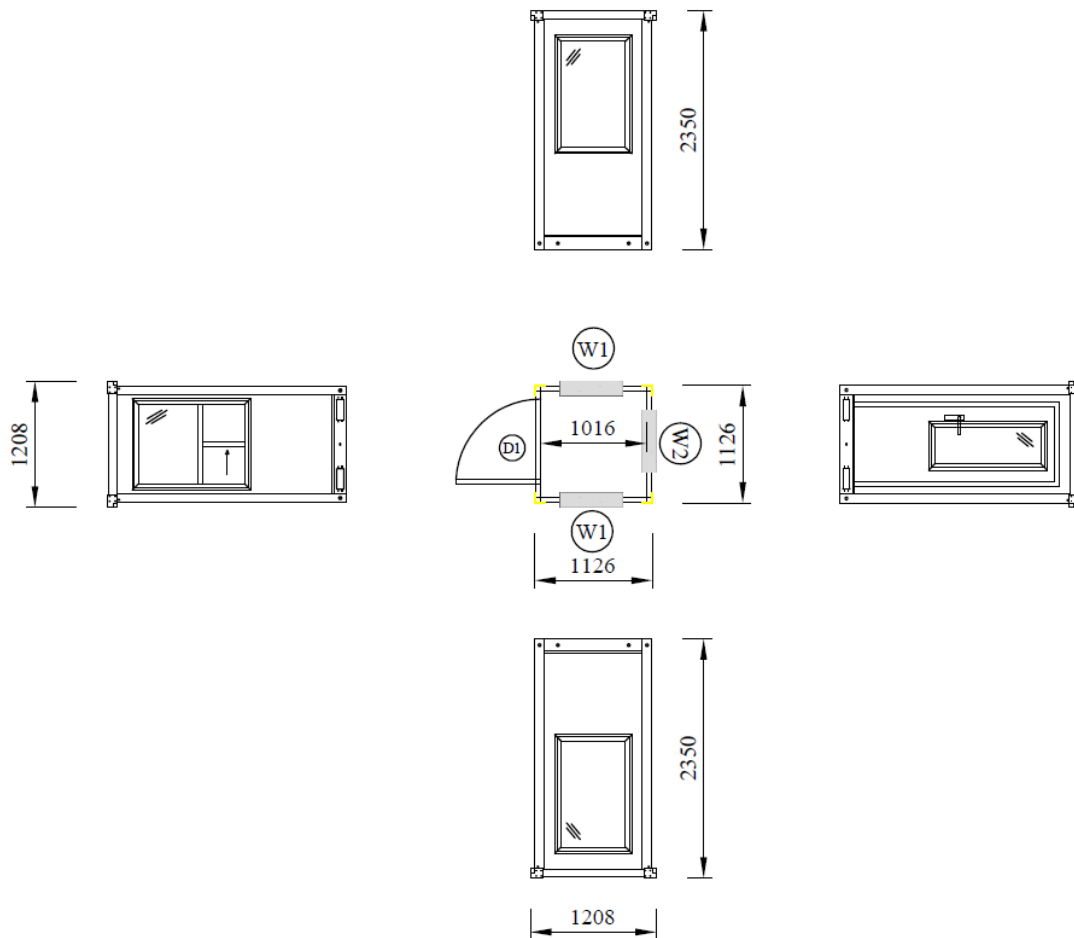
ROOF

- Exterior covering – 0.60mm powder coated box profile galvanised steel with 2 gutters for effective rainwater disposal to all four corners with additional drain points along gutter.
- Internal – Vacuum bonded sandwich panels as per walls.
- Snow loading – 0.75kN/m² evenly distributed

CHASSIS/ FRAME

- Box profile, hot dipped galvanised steel
- Corner columns – 1.5mm cold formed DKP steel
- Supplied with 4 lifting eyes. All surfaces are powder coated in RAL 6005 (Moss green).
- Supplied with forklift pockets
- Floor construction – 18mm OSB board covered with 2mm PVC linoleum (Flash point B1 – difficult to burn, smoke density Q1). Floor section has no insulation.
- Floor loading – 150kg/m² evenly distributed.

PANDA KIOSK



DOOR

- Frame – cold formed powder coated galvanised steel.
- Window – uPVC double glazed window frame with vacuum sealed unit (4+9+4)
- Ticket Window–uPVC double glazed window frame with vacuum sealed unit (4+9+4) with sliding ticket opening

ELECTRICAL EQUIPMENT

- No electrical wiring and equipment fitted.
- The unit is designed to have a surface mounted electrical installation.

NOTE

- The kiosk is not designed to comply with Building Regulations approval.
- Delivered assembled.